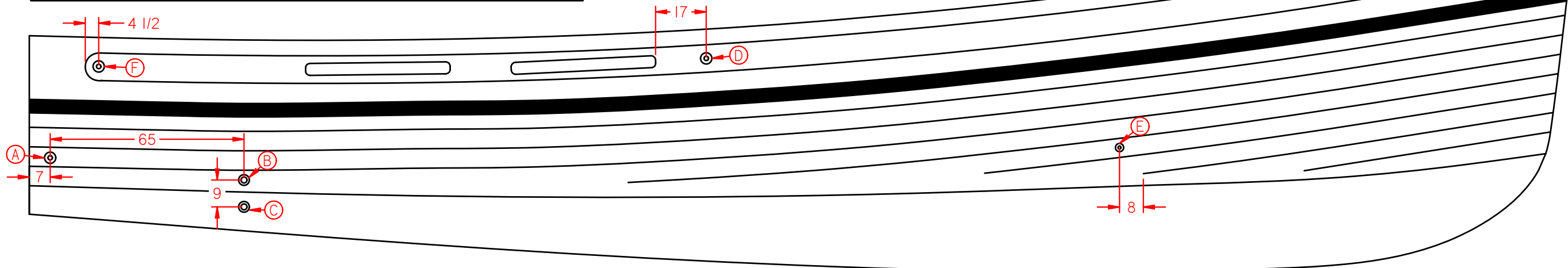




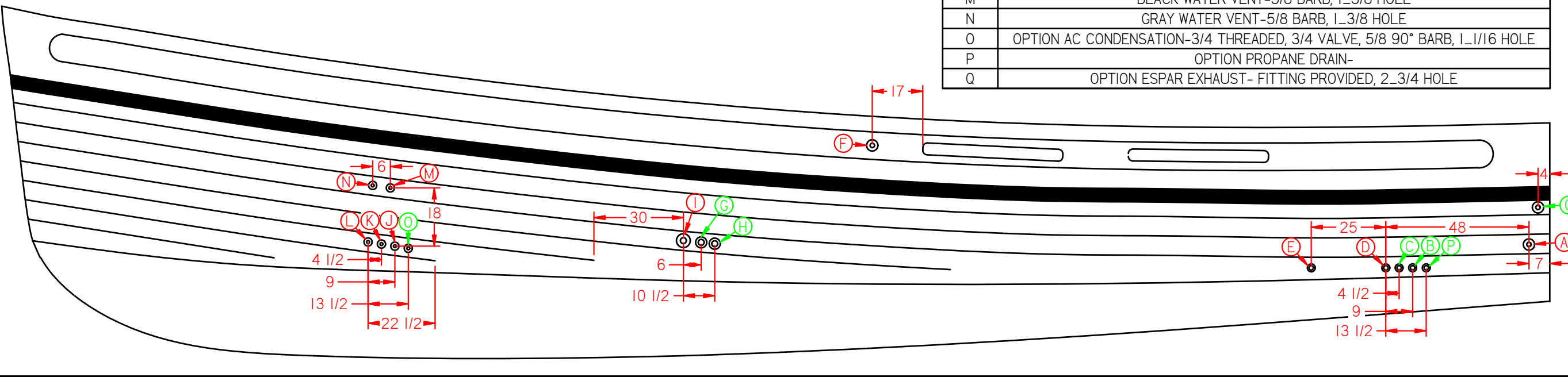
11367 Higgins Airport Way  
Burlington, WA 98233  
www.nordictug.com  
(360) 757-8847

42 STBD SIDE THRUHULL FITTINGS	
A	DECK DRAIN- 1_1/2 BARB, 1_7/8 HOLE
B	GEN DRY EXHAUST- 2 THREADED, 2 VALVE, 2 BARB, 2_3/8 HOLE
C	GEN WET EXHAUST- 1_1/2 THREADED, 1_1/2 VALVE, 1_1/2 BARB, 2 HOLE
D	FUEL VENT- 5/8 BARB, 1_3/8 HOLE
E	MID HEAD SINK- 1 THREADED, 1 VALVE, 1 90° BARB, 1_5/16 HOLE
F	FRESH WATER VENT- 5/8 BARB, 1_3/8 HOLE



42 PORT SIDE THRUHULL FITTINGS	
A	DECK DRAIN-1_1/2 BARB, 1_7/8 HOLE
B	OPTION AC DISCHARGE-3/4 THREADED, 3/4 VALVE, 5/8 90° BARB, 1_1/16 HOLE
C	OPTION AC CONDENSATION-3/4 THREADED, 3/4 VALVE, 5/8 90° BARB, 1_1/16 HOLE
D	LAZ BP-I THREADED, 1 VALVE, 1 90° BARB, 1_5/16 HOLE
E	ENGINE RM BP-I THREADED, 1 VALVE, 1 90° BARB, 1_5/16 HOLE
F	FUEL VENT-5/8 BARB, 1_3/8 HOLE
G	OPTION AC DISCHARGE-3/4 THREADED, 3/4 VALVE, 5/8 90° BARB, 1_1/16 HOLE
H	OPTION AC CONDENSATION-3/4 THREADED, 3/4 VALVE, 5/8 90° BARB, 1_1/16 HOLE
I	GALLEY SINK-1_1/2 THREADED, 1_1/2 VALVE, 1_1/2 90° BARB, 2 HOLE
J	GRAY WATER-3/4 THREADED, 3/4 VALVE, 5/8 90° BARB, 1_1/16 HOLE
K	MID BP-I THREADED, 1 VALVE, 1 90° BARB, 1_5/16 HOLE
L	FWD HEAD SINK-I THREADED, 1 VALVE, 1 90° BARB, 1_5/16 HOLE
M	BLACK WATER VENT-5/8 BARB, 1_3/8 HOLE
N	GRAY WATER VENT-5/8 BARB, 1_3/8 HOLE
O	OPTION AC CONDENSATION-3/4 THREADED, 3/4 VALVE, 5/8 90° BARB, 1_1/16 HOLE
P	OPTION PROPANE DRAIN-
Q	OPTION ESPAR EXHAUST- FITTING PROVIDED, 2_3/4 HOLE

NOTE: Vertical Dimensions are for reference only, center all thru-hulls between Plank Lines.



42-2008 THRUHULL LOCATIONS

Rev.#	Date
Error: No reference	Error: No reference
SEE PAGE 1 FOR COMPLETE REVISION HISTORY	
<b>Vessel Number:</b> 42-2008	
<b>Mass:</b> Error: No reference	
<b>Issue Date: Date Printed:</b> 4/15/2008 9/14/2009	
Drafted By: Seth Status: Available Sheet 1 of 1	
11" x 17" Sheet	Inches
COPYRIGHT 2008 NORDIC TUGS, INC. ALL RIGHTS RESERVED. THE REPRODUCTION IN WHOLE OR IN PART OR DISTRIBUTION OF THIS DOCUMENT TO ANY PERSON OR PARTY FOR ANY PURPOSE NOT SPECIFICALLY AUTHORIZED BY NORDIC TUG INC. IS STRICTLY PROHIBITED	

FILE LOCATION X:\Solid Edge Cad Files\Master Boats\42-2008\Hull\42-2008 THRUHULL LOCATIONS.dft